



Yokohama Tours & Experiences 2021



YOKOHAMA JAPAN'S FIRST PORT OF CALL



Introduction

Yokohama - the first port in Japan opened to the world after Japan's 220 years Edo period national isolation.

Since its opening, Yokohama has been Japan's gateway to the world, welcoming foreign culture and goods to Japan.

Let us introduce our bespoke tours, offering experiences which can only be found in Yokohama and its surrounds.



Half day Tours and Experiences

Discover the hidden gems of Yokohama.
Share special moments only found in Yokohama with us

Tranquil Japanese Garden and Tea Ceremony

Duration: 3.5 hours
 Minimum: 5 guests
 Pick Up & Drop Off : Osanbashi Cruise Terminal or Central Yokohama

Sankei-en is known as one of the best traditional Japanese gardens in the country. The garden was created by Sankei Hara, a local businessman who succeeded in the silk trade at the end of 19th and early 20th century. See the seasonal beauty of the garden and discover the charms of the traditional buildings – relocated to the garden from the old cultural centers of Kamakura and Kyoto. You will also see Sankei's extraordinary art collection exhibited in the gallery – a must-see highlight of the garden visit.

After enjoying your walk with a local guide, you will be escorted to the Kakusho-kaku (A designated cultural treasure building of Yokohama City). There you will take part in a private tea ceremony.

Experience the beauty of a traditional tea ceremony with the tranquil serenity of the garden as the backdrop – a special moment just as Sankei envisaged it.

Schedule

9:00- Meet your guide at Osanbashi Cruise Terminal (or Central Yokohama)and depart for the tour.

9:00-9:20 Transfer to Sankei-en Garden by private car.

9:20-11:00 Walking Tour in Sankei-en Garden

11:00-12:00 Tea Ceremony experience in a private room in Kakusho-kaku (in Sankei-en Garden)

12:00-12:30 Transfer back to the pier (or Central Yokohama)



Inclusion :

Private Tour Guide/Private Car/Admission to Sankei-en/
 Private Tea Ceremony at Kakusho-kaku

| Tier | 5-9pax | 10~14pax | 15-19pax | 20pax + |
|--------------------------------|----------|----------|----------|----------|
| Tour Price in JP¥ (Tentative) | ¥ 39,000 | ¥ 23,500 | ¥ 16,400 | ¥ 12,700 |
| Tour Price in US\$ (Tentative) | \$355 | \$214 | \$150 | \$115 |

*Price per person *Tax included

*Exchange Rate: 1USD=110JPY. The USD pricing may change depending on the exchange rate.

The Way of Zen (A private Zen experience at Hakusan Tokozenji temple)

Duration: 3-3.5 hours
Minimum: 5 guests
Pick Up & Drop Off : Osanbashi Cruise Terminal or Central Yokohama

Zen Buddhism was introduced to Japan 800 years ago from China and developed into a unique form of Buddhist practice.

In this program guests will be escorted to a private zen workshop held at the esteemed Tokozenji Temple in southern Yokohama.

Tokozenji Temple is one of the oldest Buddhist Temples of Rinzai Sect of Zen Buddhism, established around 1,200 AD.

Escape the hustle and bustle of daily life and rediscover yourself in guided Zen meditation – this workshop will be led by the master monk of the temple.

After the workshop, enjoy a break with a cup of Japanese Maccha and chat with the Zen Master.

Schedule

9:00- Meet your guide at Osanbashi Cruise Terminal (or Central Yokohama)and depart for the tour.

9:00-9:30 Transfer to Hakusan Tokozenji by private car

9:30-10:30 Arrival at Hakusan Tokozenji. Zen Workshop (Private)

10:30-11:30 Tea Break in the temple. Enjoy chatting with the Zen Master.

11:30-12:00 Transfer back to the pier (or Central Yokohama)



(C)白山東光禅寺

Inclusion :

Private Tour Guide/Private Car/ Admission to Tokozenji Temple/Private Zen Meditation Workshop

| Tier | 5-9pax | 10~14pax | 15-19pax | 20pax + |
|--------------------------------|----------|----------|----------|---------|
| Tour Price in JP¥ (Tentative) | ¥ 24,000 | ¥ 16,400 | ¥ 12,000 | ¥ 9,500 |
| Tour Price in US\$ (Tentative) | \$218 | \$149 | \$109 | \$86 |

*Price per person *Tax included

*Exchange Rate: 1USD=110JPY. The USD pricing may change depending on the exchange rate.

Yokohama Pottery Road

Makuzuyaki and Okura To-en Ceramics

Duration: 4.5 hours / Minimum: 5 guests
 Pick Up & Drop Off : Osanbashi Cruise Terminal or Central Yokohama

Makuzu-yaki Ceramics was established in Yokohama by Master Kozan Miyagawa, originally an artisan from the famous Raku-yaki potter family in Kyoto. In 1876 Kozan exhibited his work at the Philadelphia EXPO with great success and the exposure he gained from the show made him and the Makuzu-yaki style very popular worldwide. After Kozan passed away, his followers continued his great work until the kiln had to be closed after it was damaged during an air raid in WW2. Kozan is renowned in Japan as one of the great master potters and while his work is no longer produced, his style "Makuzuyaki" has become legendary.

In this program you will be guided by the museum director on an exclusive tour of the Makuzu Museum which houses the Kozan family's precious collection of artwork. The museum director will explain the fascinating story behind Kozan and his works.



After the visit to the museum, we will visit Okura Toen Ceramics. Okura Toen Ceramics is known as one of the top ceramic producers in Japan, as well as the purveyor to the Imperial Household. Under the slogan "be the best of the best", the company has been producing master pieces for their royal customers. At Okura Toen we will step into the factory and get up close to see the works by the artisan ceramists. At the end of the visit, enjoy Tea served in the finest Okura Toen ceramic cups.



Schedule

- 9:00- Meet your guide at Osanbashi Cruise Terminal (or Central Yokohama)and depart for the tour.
- 9:00-9:15 Transfer to Makuzu Museum by private car
- 9:15-10:15 Visit to Makuzu Museum. Guided tour by the Museum Director.
- 10:15-10:45 Transfer to Okura Toen Ceramics
- 10:45-12:45 Visit to Okura Toen Ceramics (Including Tea Time)
- 12:45-13:15 Transfer back to the pier (or Central Yokohama)

Inclusion :

Private Tour Guide/Private Car/ Admission to Makuzu Museum/Visit to Okura Toen Pottery (Tea Time and small gift included)

| Tier | 5-9pax | 10~14pax | 15-19pax | 20pax + |
|--------------------------------|----------|----------|----------|----------|
| Tour Price in JP¥ (Tentative) | ¥ 23,500 | ¥ 16,600 | ¥ 12,900 | ¥ 11,000 |
| Tour Price in US\$ (Tentative) | \$214 | \$151 | \$118 | \$100 |

*Price per person *Tax included

*Exchange Rate: 1USD=110JPY. The USD pricing may change depending on the exchange rate.

Yokohama's Exotic Atmosphere

Yamate – Motomachi – China Town

YOKOHAMA JAPAN'S FIRST PORT OF CALL

Duration: 3.25 hours / Minimum: 5 guests
 Pick Up & Drop Off : Osanbashi Cruise Terminal or Central Yokohama



(C) Yokohama Visitors Guide

Along with the opening of the port, many foreign diplomats and traders settled in Yokohama's Yamate district, and the area soon became culturally diverse and developed an exotic international atmosphere.

Looking over the port of Yokohama, even to this day Yamate Hill is a pretty residential area where you will find elegant and extravagant traditional western style homes dating from the late 19th century. A walk around the hillside area will find the Foreign General Cemetery and Harbor View Park as highlights. Head down to reach the Motomachi Area and Motomachi shopping area with its many high-end boutiques and fancy eateries – a sign of local preference.



(C) Tetsuro Tanabe



(C) Tetsuro Tanabe



(C) Tetsuro Tanabe

After enjoying a walk around the Yamate Area and Motomachi, it's time to explore China Town. Lunch will be organized at Kaseiro, one of the top Chinese Restaurants in Yokohama. Enjoy a special lunch course, prepared exclusively by the executive chef.

Schedule

- 10:00- Meet your guide at the tour pick-up point.
- 10:00-10:10 Transfer to Yamate Area by private car
- 10:10-11:30 Walking in Yamate Area and Motomachi
- 11:30-13:00 Lunch in Yokohama China Town (Kaseiro)
- 13:00-13:15 Transfer back to the pier (or Central Yokohama)

Inclusion :
 Private Tour Guide/Private Car/Lunch at Kaseiro/
 Walking Tour in Yamate Area

| Tier | 5-9pax | 10~14pax | 15-19pax | 20pax + |
|--------------------------------|----------|----------|----------|----------|
| Tour Price in JPY (Tentative) | ¥ 26,700 | ¥ 20,650 | ¥ 17,100 | ¥ 15,300 |
| Tour Price in US\$ (Tentative) | \$243 | \$188 | \$155 | \$139 |

*Price per person *Tax included
 *Exchange Rate: 1USD=110JPY. The USD pricing may change depending on the exchange rate.

Yokohama Craft Beer Walk & Pub Crawl

Visit a local Microbrewery & a local Japanese Pub

Duration: 4 hours / Minimum: 5 guests
 Pick Up & Drop Off : Osanbashi Cruise Terminal or Central Yokohama

Known as the birthplace of traditional Japanese Beer, Yokohama has a beer loving culture and more recently a thriving local craft beer scene.

Your guide will escort you an area called Noge – an old downtown part of Yokohama. Here you will discover many small exciting local restaurants and bars. The district is still a very popular night out and drinking destination in Yokohama for locals.



Walk the lively streets with your guide and visit a local microbrewery of fine craft beer. At the brewery you can see behind the scenes and learn about the intricacies of beer brewing from the passionate brewery staff. Of course, there will be the opportunity for tasting the freshly brewed craft beer.



After enjoying some of the local beer you will be guided around more of this exciting corner of town. Pop into one of the many Izakaya (Japanese Style Pub) and Tachinomiya (Standing Bar). Here you can drink Sake and try some tapas style dishes from their extensive menus. Dishes like: Yakitori (Skewered Chicken), Oden, fresh seafood, Japanese Noodles, Sushi and so on. Enjoy your stay in the nightlife district and experience how the locals enjoy their evenings.

Schedule

- 16:00-16:10 Meet your guide at the tour pick-up point. Drive to Noge.
- 16:10-18:00 Craft Beer Tasting at a local micro beer brewery
- 18:10-19:50 Pub Crawl in Noge
- 19:50-20:00 Transfer back to the pier (or Central Yokohama)

Inclusion :

Private Tour Guide/Private Car/Craft Beer Tasting/Pub Crawl in Noge (Food & Drink)

| Tier | 5-9pax | 10~14pax | 15-19pax | 20pax + |
|--------------------------------|----------|----------|----------|----------|
| Tour Price in JP¥ (Tentative) | ¥ 16,000 | ¥ 15,720 | ¥ 11,600 | ¥ 10,700 |
| Tour Price in US\$ (Tentative) | \$145 | \$142 | \$105 | \$97 |

*Price per person *Tax included

*Exchange Rate: 1USD=110JPY. The USD pricing may change depending on the exchange rate.



Full Day Tours & Experiences

A special day spent in Yokohama.
Be amazed by bespoke local experiences.
Wonderful culinary adventures will be a highlight.

Modernization and Yokohama Craftmanship

Ceramics and Beer Brewing - 1



Since the period of Modernization around the end of 19th century, Yokohama developed as a leading International Trading Port, and along with trade came manufacturing. Japan is world renowned for its manufacturing excellence and Yokohama has many fine examples.

In this program you will visit two of Yokohama's top manufacturing companies to learn more about Japanese craftsmanship.



The first stop will be Okura Toen Ceramics, known as one of the top ceramic producers in Japan, as well as the purveyor to the Imperial Household.

Under the slogan "be the best of the best", the company has been producing master pieces for their royal customers. We will step into the factory and get up close to see works by the artisan ceramists.

At the end of the visit, enjoy Tea served in the finest Okura Toen ceramic cups.

Duration: 8 hours / Minimum: 5 guests

Pick Up & Drop Off : Osanbashi Cruise Terminal or Central Yokohama

After enjoying your visit to the pottery, you will be transferred to the restaurant for lunch. Lunch will be served at the French Restaurant Le Normandy, the main dining restaurant in Hotel New Grand. Hotel New Grand is one of the top hotels in Yokohama and has been the hotel of choice for many foreign dignitaries and VIPs since its opening in 1927.



Enjoy a special French Course menu at the restaurant prepared by executive chef Yoichiro Hanaki. It will be a superb French course meal inspired by the legacy of the hotel and the culinary passions of the hotel's past senior chefs. The Hotel New Grand is renowned as the origin of authentic French Cuisine in Japan.

Continued on the next page ↓ 10

Modernization and Yokohama Craftmanship

Ceramics and Beer Brewing - 2



After enjoying your lunch, we take a private boat and enjoy a cruise of Yokohama Bay stopping at Kirin Beer Yokohama Brewery.

Nowadays, KIRIN is known as an international beverage company, however its humble beginnings was as one of Yokohama's first breweries. The brewery was established at the end of the 19th century as a joint venture between foreigner traders and Japanese businessmen. Follow traditions and be innovative. – KIRIN Brewery's maxim.



During your factory visit, you will see the assembly line in action and see the latest technologies for beer brewing, as well as a high-tech presentation highlighting KIRIN's craftsmanship.

The factory visit will be concluded with Beer tasting. Enjoy a glass of freshly brewed beer, made with a craftsman's passion.

After enjoying beer tasting, we will head back to the tour starting point.

Schedule

- 9:00- Meet your guide at tour pick-up point
- 9:00-9:30 Transfer to Okura Toen Ceramics by private car
- 9:30-11:30 Visit to Okura Toen Ceramics (Including Tea Time)
- 11:30-12:00 Transfer to the restaurant by private car
- 12:00-13:30 Lunch at Le Normandy in Hotel New Grand
- 13:30-13:45 Transfer to the boat pier by private car
- 13:45-14:15 Boat Cruise to Yokohama KIRIN Beer Brewery.
* If weather is not good, this transfer will be made by bus.
- 14:15-15:45 Factory Visit to Yokohama KIRIN Beer Brewery
- 15:45-16:15 Transfer back to the pier (or Central Yokohama)

Inclusion :

Private Tour Guide/Private Car/ Visit to Okura Toen Ceramics (Tea Time and small gift included)/Lunch at Le Normandy/Private Boat Cruise/Visit to Yokohama KIRIN Beer Brewery

| Tier | 5-9pax | 10~14pax | 15-19pax | 20pax + |
|--------------------------------|----------|----------|----------|----------|
| Tour Price in JP¥ (Tentative) | ¥ 49,320 | ¥ 33,360 | ¥ 25,880 | ¥ 20,100 |
| Tour Price in US\$ (Tentative) | \$448 | \$303 | \$235 | \$183 |

*Price per person *Tax included

*Exchange Rate: 1USD=110JPY. The USD pricing may change depending on the exchange rate.

Yokohama - Past and Present

Yokohama Port Museum, Nippon-maru, Yokohama Gyunabe and the Tea Ceremony in the Sky - 1

Duration: 7-7.5 hours / Minimum: 5 guests

Pick Up & Drop Off : Osanbashi Cruise Terminal or Central Yokohama

Discover the history of Yokohama.

On the day, you will be escorted on a special historical tour of the Minato Mirai Area. Learn about the spectacular development of Yokohama in recent times.



The tour will start off at the Yokohama Port Museum. The exhibition presents Yokohama's growth from a small fishing village in medieval times and offers insight into the Meiji Restoration and its effect on Yokohama and Japan. See the city's growth post WW2, and the extraordinary development of modern Yokohama – a symbolic city of modern Japan. You will learn all the spots of interest and hear stories of local history in an exclusive museum tour with the museum curator.

In addition to the main exhibition, you can also enjoy a small art museum dedicated to Yohei Yanagihara, a famous designer/cartoonist from Yokohama. He was passionate about city and its port, creating many pieces of art themed around the ships and port of Yokohama.

After visiting the museum, you will be taken to the Nipponmaru, a majestic sailing ship docked next to the museum. The ship was a training vessel for young marine students and travelled around the world for many years. A navigation officer will guide you around the ship and introduce a sailor's life at sea.



Lunch will follow the Nipponmaru visit. You will dine at the restaurant Araiya – a famous restaurant with a 120-year history. It is considered to be one of the best Gyunabe (Sukiyaki) restaurants in the city.



(C) Tetsuro Tanabe



Continued to the next page

Yokohama - Past and Present

Yokohama Port Museum, Nippon-maru, Yokohama Gyunabe and the Tea Ceremony in the Sky - 2



(C)京浜フェリーボート株式会社

After lunch, you will be transferred to a boat pier and board a canal boat cruise where the captain will guide you around the canals of Yokohama. You will see the Yoshida Shinden canal built 350 years ago and some of the more recent canals which have been developed in recent times. The cruise will offer you an interesting perspective of a city of great contrasts – historical and modern.

After enjoying the boat cruise, the guide will take you to the Tea Room Kaiko-an on 65th floor of Yokohama's Landmark Tower.

Enjoy a tea ceremony with a sweeping panorama of Yokohama city.



(C)Yokohama Royal Park Hotel

Schedule

9:45- Meet your guide at tour pick-up point

9:45-9:55 Transfer to Yokohama Port Museum by private car

10:00-12:00 Yokohama Port Museum (including Ryohei Yanagihara Art Museum) and Nipponmaru. Exclusive guided tour.

12:00-12:15 Transfer to lunch at the restaurant by private car

12:15-13:30 Lunch at Araiya (Gyunabe)

13:30-13:45 Transfer to the boat pier by private car

13:45-15:00 Private Boat Cruise on Yokohama Canal

* If weather is not good, an alternative activity will be arranged.

15:15-16:30 Private Tea Ceremony at Kaiko-an on 65th floor of the Landmark Tower

16:30-16:45 Transfer back to the pier (or Central Yokohama)

Inclusion :

Private Tour Guide/Private Car/ Visit to Yokohama Port Museum and Nipponmaru (Special Guided Tour)/Gyunabe Lunch at Araiya Restaurant/Yokohama Canal Cruise by Private Boat/Private Tea Ceremony at Kaiko-an in Landmark Tower

| Tier | 5-9pax | 10~14pax | 15-19pax | 20pax + |
|--------------------------------|----------|----------|----------|----------|
| Tour Price in JP¥ (Tentative) | ¥ 89,800 | ¥ 54,600 | ¥ 40,900 | ¥ 33,800 |
| Tour Price in US\$ (Tentative) | \$816 | \$496 | \$372 | \$307 |

*Price per person *Tax included

*Exchange Rate: 1USD=110JPY. The USD pricing may change depending on the exchange rate.

Venture into tomorrow with lessons from the past

Discover the Japanese Spirit at a Zen Temple and Japanese Garden -1



(C)白山東光禪寺

We all live in a great time of change and our lives have become so busy. However, as human beings, we have a natural desire for inner peace and calm. As a Zen Master might point out – an ancient tree is upset by nothing.

In this program, you will experience a private Zen workshop held at Hakusan Tokozenji Temple in southern Yokohama. Escape the hustle and bustle of daily life and rediscover yourself in guided silent Zen meditation – this workshop will be led by the master monk of the temple, Mr. Ozawa. After the workshop, enjoy a break with a cup of Japanese Maccha. You also can enjoy a chat with the Zen Master.

Duration: 7-8 hours / Minimum: 5 guests
Pick Up & Drop Off : Osanbashi Cruise Terminal or Central Yokohama

After the Zen workshop, you will be transferred to lunch at the restaurant Araiya – a famous restaurant with a 120-year history. It is considered to be one of the best Gyunabe (Sukiyaki) restaurants in the city.



(C) Tetsuro Tanabe



(C) Tetsuro Tanabe



Continue to the next page

Venture into tomorrow with lessons from the past

Discover the Japanese Spirit at a Zen Temple and Japanese Garden -2



After lunch, the program will continue with a visit to Sankei-en Garden, known as one of the best traditional Japanese gardens in the country.

After enjoying your walk with a local guide, you will be escorted to Kakusho-kaku (A designated cultural treasure building of Yokohama City). There you will take part in a private tea ceremony.

Schedule

- 9:00- Meet your guide at tour pick-up point
- 9:00-9:25 Transfer to Hakusan Tokozenji by private car
- 9:25-11:30 Arrival at Hakusan Tokozenji. Zen Workshop (Private)
Tea Break in the temple. Enjoy chatting with the Zen Master.
- 11:30-12:00 Transfer to the lunch restaurant by private car
- 12:00-13:30 Lunch at Araiya (Gyunabe)
- 13:30-13:45 Drive to Sankei-en Garden
- 13:45-15:30 Walking Tour in Sankei-en Garden
Tea Ceremony experience at a room in Kakusho-kaku
- 15:30-16:00 Transfer back to the pier (or Central Yokohama)

Inclusion :

Private Tour Guide/Private Car/ Admission to Tokozenji Temple/Private Zen Meditation Workshop/Gyunabe Lunch at Araiya Restaurant/Visit to Sankei-en Garden/ Private Tea Ceremony at Kakusho-kaku

| Tier | 5-9pax | 10~14pax | 15-19pax | 20pax + |
|--------------------------------|----------|----------|----------|----------|
| Tour Price in JP¥ (Tentative) | ¥ 56,580 | ¥ 38,340 | ¥ 30,200 | ¥ 26,100 |
| Tour Price in US\$ (Tentative) | \$515 | \$348 | \$275 | \$237 |

*Price per person *Tax included

*Exchange Rate: 1USD=110JPY. The USD pricing may change depending on the exchange rate.

Exciting Yokohama

Nissan Stadium and Yokohama Stadium -1

Duration: 7hours / Minimum: 5 guests
Pick Up & Drop Off : Osanbashi Cruise Terminal or Central Yokohama



Famous as a sport friendly city, in recent years Yokohama has hosted some of the biggest international sporting events with great success. The great stadiums of Yokohama have become iconic sporting venues in Japan. Yokohama is also home to a number of Japan's great sporting teams, notably their professional baseball team, Yokohama DeNA BayStars. This team has achieved excellence in both competition and team branding.

In this program, we will tour two major stadiums, the Nissan Stadium (Yokohama International Stadium) and the Yokohama Stadium. We will also visit other spots of interest around the stadiums to discover some hidden charms of the city.

Nissan Stadium hosted many Rugby World Cup 2019 matches including the Final. The excitement of that tournament is still fresh in the memory of the people of Yokohama. The stadium also hosted the Final of the 2002 FIFA World Cup.

We will step into this gigantic stadium and receive a private guided tour of the facilities inside. We will walk through the players' locker room (normally off limits) and also walk out onto the football/rugby field where you will experience audio effects reproducing the atmosphere of the 2002 FIFA World Cup final. Don't forget to check out the monuments placed around the stadium.



After enjoying the stadium tour, you will visit the Shin-Yokohama Ramen Museum for lunch.



In the Ramen Museum, there are many popular Ramen restaurants representing the different Ramen loving regions of Japan. You can choose the Ramen you like and enjoy the atmosphere inside the museum – a replica of a restaurant lined Tokyo street from the late 1960s.

After lunch at the Ramen Museum, you will be transferred to Yokohama Stadium in the Kannai Area – home of the Yokohama DeNA BayStars.



Continue to the next page

Exciting Yokohama

Nissan Stadium and Yokohama Stadium -2



Yokohama DeNA BayStars are one of the most popular Professional Baseball Teams in Japan. The team's incredible popularity in Japan can be in part credited to their innovative marketing strategies. They have created an atmosphere of "community fun" which has attracted many new fans to the club and many new fans to the sport.



The area was originally used as a cricket ground for foreigners that lived in this area around the end of the 19th century. The ground has since transformed several times with the most recent redevelopment of the stadium in 1978.

During our visit, we will learn about the stadium's history and discover the story behind its popularity. After the tour, you will be taken to the craft beer pub "&9", run by Yokohama DeNA BayStars. Enjoy craft beer tasting with your tour mates and make a toast for the day!

(*for those don't drink alcohol, non-alcohol drinks are also available)

Schedule

- 9:00- Meet your guide at tour pick-up point
- 9:00-9:25 Transfer to Nissan Stadium by private car
- 9:25-11:30 Walking Tour in Nissan Stadium
- 11:30-11:45 Drive to Shin-Yokohama Ramen Museum
- 11:45-13:00 Visit & Ramen Lunch at Shin-Yokohama Ramen Museum
- 13:00-13:30 Drive to Kannai Area
- 13:30-15:00 Yokohama Stadium Tour
- 15:00-16:00 Craft Beer tasting at &9
- 16:00-16:15 Transfer back to the pier (or Central Yokohama)

Inclusion :

Private Tour Guide/Private Car/Nissan Stadium Tour/Entrance to Shin-Yokohama Ramen Museum & Ramen Lunch/Yokohama Stadium Tour/2Drinks at &9 (Craft Beer Place near Yokohama Stadium)

| Tier | 5-9pax | 10~14pax | 15-19pax | 20pax + |
|--------------------------------|----------|----------|----------|----------|
| Tour Price in JP¥ (Tentative) | ¥ 31,800 | ¥ 23,800 | ¥ 18,750 | ¥ 16,200 |
| Tour Price in US\$ (Tentative) | \$289 | \$216 | \$170 | \$147 |

*Price per person *Tax included

*Exchange Rate: 1USD=110JPY. The USD pricing may change depending on the exchange rate.

Hidden attractions of Kanazawa



Shomyoji Temple, Kanazawa Bunko Museum, Laboratory Museum, Yokohama Bayside Marina

Duration: 6.5hours / Minimum: 5 guests
Pick Up & Drop Off : Osanbashi Cruise Terminal or Central Yokohama

While Minato-mirai, Yamashita Park and the Kannai district might be the highlights on most Yokohama tourist maps, there are number of very interesting places that you won't find on such maps that are also well worth the visit.

On this tour, you will be taken to some of the hidden spots of Kanazawa Ward.



Leaving from central Yokohama, the first stop will be a visit to Shomyoji Temple.

This temple was established in the Kamakura Period (1258) by Sanetoki Houjo, the chief retainer of Kamakura Samurai Government. Hidden away from major traffic routes, the temple has a special charm and is famous for its seasonal beauty. There are nice walking paths around the temple grounds allowing you to take in the stunning Japanese garden and the picturesque bridge spanning the Ajigaike Pond.

After Shomyoji temple, the next stop on the program will be a visit to Kanazawa Bunko Museum.

The site date back to the 13th century when it was used as a storage facility for literature owned by Kamakura Samurai Government. It now serves as the prefectural Museum of History and houses many historical resources related to the Kanazawa Hojyo families, as well as some national treasures.



After enjoying your visit to the museum, you will be taken to lunch. It will be served at Hakkei Teppanyaki Restaurant with a panoramic view of Tokyo Bay from 18th floor of Yokohama Techno Tower Building.

You will enjoy a special Teppanyaki lunch prepared with fresh local ingredients from neighboring Miura Peninsula, including Tuna fish from Misaki Port and Hayama Wagyu Beef.



Continue to the next page

Hidden attractions in Kanazawa-ku



Shomyoji Temple, Kanazawa Bunko Museum, Laboratory Museum, Yokohama Bayside Marina

After lunch, the program continues with a visit to a Laboratory museum. This former research Laboratory was where prominent Japanese bacteriologist Dr. Hideyo Noguchi, who discovered in 1911 the agent of syphilis as a cause of progressive paralytic disease.

After the Meiji Restoration and along with the start of foreign trade, Japan faced in influx of infectious diseases which had not existed in Japan previously.



The Bacterial Laboratory was built as the part of the defense against such infections and was situated in part of the Yokohama quarantine station. In 1899, at age 22, Noguchi started working at the laboratory as an assistant quarantine inspection medical officer and soon after taking his post he discovered a plague infection in a foreign sailor.

His success detecting and treating infections made him famous in the field of bacteriology and led to a celebrated international career. Noguchi was honoured with Japanese and foreign decorations, and he received honorary degrees from number of universities.

The laboratory Museum tour presents his achievements.



After visiting Laboratory Museum, we will visit Mitsui Outlet Park Yokohama Bayside. It is a brand-new expansive shopping mall, packed with many popular brand boutiques and restaurants. Enjoy shopping, wondering around the mall and surrounding waterfront area.

Schedule

- 9:30- Meet your guide at tour pick-up point
- 9:30-10:00 Transfer to Shomyoji Temple by private car
- 10:00-11:30 Visiting Shomyoji Temple and Kanazawa Bunko Museum
- 11:30-11:45 Drive to the lunch restaurant
- 11:45-13:00 Special Lunch at Hakkei Teppanyaki Restaurant
- 13:15-13:35 Visit to Laboratory Museum
- 13:50-15:00 Free Time in Mitsui Outlet Park Yokohama Bayside
- 15:00-15:30 Transfer back to the pier (or Central Yokohama)

Inclusion :

Private Tour Guide/Private Car/Visit to Shomyoji Temple/Entrance to Kanazawa Bunko Museum/Lunch at Hakkei Teppanyaki Restaurant / Visit to Laboratory Museum & Mitsui Outlet Park Yokohama Bayside

| Tier | 5-9pax | 10~14pax | 15-19pax | 20pax + |
|--------------------------------|----------|----------|----------|----------|
| Tour Price in JP¥ (Tentative) | ¥ 39,600 | ¥ 31,500 | ¥ 26,800 | ¥ 24,400 |
| Tour Price in US\$ (Tentative) | \$360 | \$286 | \$244 | \$166 |

*Price per person *Tax included

*Exchange Rate: 1USD=110JPY. The USD pricing may change depending on the exchange rate.



1 Night – 2 Days Package Tours from Yokohama

Why not venture beyond Yokohama and enjoy local cuisines and hotel stays in the neighboring areas – Bespoke tours designed for the adventurous traveler.

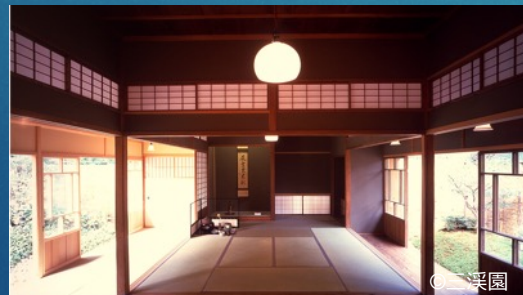
Discover the history of Yokohama and Kamakura

Day 1 - 1



The day starts with a visit to beautiful Sankei-en Garden.

In the quiet of morning enjoy a walk through this exquisite Japanese garden – enjoy the peaceful ponds and well manicured shrubs and trees. After the garden walk take part in a private tea ceremony at the Kakusho-kaku (Designated cultural treasure building of Yokohama City). Here you will relax in the tea room enjoying a picturesque view of the garden.



After enjoying the tea ceremony, you will be taken to lunch at Ota Nawaren. This restaurant is famous for its delicious traditional Meiji-era Gyunabe. In the Meiji-era Japanese were not familiar with cooking beef, so they developed unique cooking methods, often mixing beef with Miso paste for flavor.



Popular and very tasty, you will enjoy this culinary experience.

After lunch, you will be escorted to Minato Mirai Area. Here you will visit the Yokohama Port Museum and learn about the history of the Yokohama port and its vibrant diverse local culture. The interesting exhibition presents Yokohama's growth from a small fishing village in medieval times and offers insight into the Meiji Restoration and its effect on Yokohama and Japan.



Continued on the next page

Discover the history of Yokohama and Kamakura

Day 1 - 2



(C)ホテルニューグランド

After the museum tour, you will check in Hotel New Grand. A historic and highly regarded hotel in the Yokohama area and known as the hotel of choice for many visiting foreign dignitaries and VIPs since its opening in 1927

After refreshing in your room, meet in Sea Guardian II Bar for a pre-dinner cocktail.

There are several signature cocktails, many of which are certain to make you a fan of this fine bar.



(C)ホテルニューグランド

Dinner will be served at the French Restaurant Le Normandy. Enjoy the authentic French Course menu with a spectacular night view of Yokohama.



(C)ホテルニューグランド

Day1 Schedule

- 9:00- Meet your guide at tour pick-up point
 - 9:00-9:20 Transfer to Sankei-en by private car
 - 9:20-11:00 Walking Tour in Sankei-en
 - 11:00-12:00 Private Tea Ceremony at Kakusho-kaku
 - 12:00-12:15 Drive to lunch restaurant
 - 12:15-13:30 Gyunabe Lunch at Ota Nawanoren Restaurant
 - 13:45-14:45 Visit to Yokohama Port Museum
 - 14:45-15:00 Drive to Hotel New Grand
 - 15:00 Check in to Hotel New Grand
 - Free at leisure until dinner
 - 18:00- Pre-dinner cocktail at Bar Sea Guardian II in the hotel
 - 19:00- Dinner at Le Normandy in the hotel
- <Overnight Stay> Hotel New Grand

Inclusion :

Private Tour Guide/Private Car/Entrance to Sankei-en Garden/Private Tea Ceremony at Kakusho-kaku/Lunch at Ota Nawanoren Restaurant/Entrance to Yokohama Minato Museum/ Pre-Dinner Cocktail at Sea Guardian II Bar & Dinner at Le Normandy restaurant (both in Hotel New Grand)

Overnight Stay at Hotel New Grand (Breakfast included)



Continue to the next page

Discover the history of Yokohama and Kamakura

Day 2 - 1



Start the day with the breakfast at the harbor view restaurant in the hotel.

The guide will then take you to neighboring areas of Yokohama where you will discover some of the highlights the region has to offer.



The first spot will be Engakuji Temple in Kamakura – one of the leading Zen temples in Japan.

Still functioning as a Zen monastery to this day, training many Zen monks, the temple is considered the heart of Zen Buddhism in Japan.

A Monk from the temple will guide you on a special tour of the temple, followed by a Zen Meditation workshop in a private section. Sit in silence, take a deep breath and quiet your mind.



After visiting Engakuji Temple, you will have lunch at Hachinoki Restaurant known for its Shojin Ryori Cuisine (Buddhist vegetarian course meal).

Shojin Ryori Cuisine represents the essence of Buddhism. Increasing in popularity these days with the health conscious, Shojin Ryori is a traditional Japanese cuisine that has very delicate flavors, presented with care by artisan chefs.



After having lunch, you will be driven through Kamakura town and head to Hayama – a scenic drive along the coastal 134 route.



Continued on the next page

Discover the history of Yokohama and Kamakura

Day 2 - 2



In Hayama you will visit the museum of Modern Art Hayama. Enjoy an interesting art exhibition while taking in the panoramic ocean vista of Sagami Bay. After the museum visit you can walk down to Isshiki beach to take a walk.

After your stay in Hayama, we drive back to Yokohama for the embarkation of your cruise ship.

Day 2 Schedule:

- 9:00- Departure from Hotel New Grand in Yokohama
- 9:00-9:30 Drive to Engakuji Temple with your private guide
- 9:30-11:30 Private Visit and Zen Meditation workshop at Engakuji Temple
- 11:45-13:15 Shojin Ryori Lunch at Hachinoki Restaurant
- 13:15-13:45 Drive to Hayama
- 13:45-14:45 Museum of Modern Art Hayama visit
- 14:45-15:15 Walk on Isshiki Beach
- 15:15-16:00 Drive back to Yokohama Cruise Terminal. On arrival, embarkation.

Inclusion :

Private Tour Guide/Private Car/Private Visit & Zen workshop at Engakuji Temple/Shojin Ryori Lunch at Hachinoki Restaurant/Entrance to the museum of Modern Art Hayama

| Tier | 5-9pax | 10~14pax | 15-19pax | 20pax + |
|--------------------------------|-----------|-----------|-----------|----------|
| Tour Price in JPY (Tentative) | ¥ 117,700 | ¥ 115,000 | ¥ 104,000 | ¥ 93,800 |
| Tour Price in US\$ (Tentative) | \$1,070 | \$1,045 | \$945 | \$853 |

*Price per person *Tax included

*Exchange Rate: 1USD=110JPY. The USD pricing may change depending on the exchange rate.

Yokohama & Hakone – Discover the tradition and the beauty Day1 - 1



Since Yokohama's port opened to the world, the city has developed into an international city. Influenced by many foreign cultures, Yokohama has a multicultural flair with many interesting and vibrant areas, and an atmosphere not found anywhere else in Japan.



Day 1 of this program will start in the Yamate District. A guided walk will take you along the quaint streets lined with western influenced architecture. We will also stop at Harbor View Park and Yamashita Park – once a pier for foreign trading ships at the end of 19th century.

After Yamashita Park, we will continue onto Yokohama China Town.

Enjoy a special lunch course at Kaseiro Chinese Restaurant, one of the best restaurants in this China Town.



After lunch the guide will take you to Okura Toen Ceramics. Okura Toen Ceramics is known as one of the top ceramic producers in Japan, as well as the purveyor to the Imperial Household.

At Okura Toen we will step into the factory and get up close to see the works by great artisan ceramists. The visit will be concluded with Tea served in the finest Okura Toen ceramic cups. (Small gift will also be arranged)

Yokohama & Hakone – Discover the tradition and the beauty Day 1 - 2

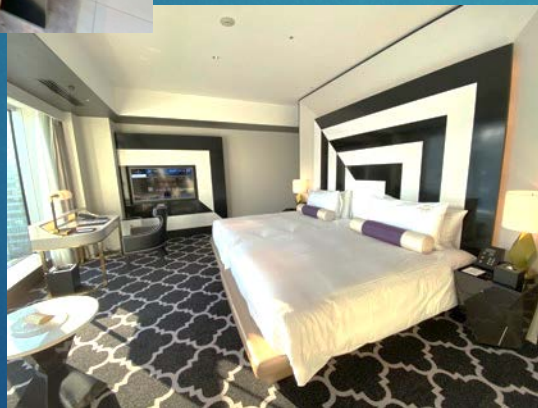


After the visit to Okura Toen Pottery, we drive back to central Yokohama to check into the hotel.



An overnight stay will be arranged at The Kahara Hotel & Resort Yokohama – a brand-new hotel from the Hawaiian Luxury Hotel Brand. It's a glamorous hotel that is known to be frequented by many VIPs and celebrities.

Enjoy your stay in this fabulous hotel with the welcoming charm of Hawaiian hospitality.



Dinner will be at Bashamichi Jyubankan Restaurant, a classic French restaurant preserving the atmosphere of the Meiji Era.

Enjoy a full course meal which is beloved by many local guests.



Day1 Schedule

- 9:30- Meet your guide at tour pick-up point
- 9:30-9:50 Transfer to Yamate District by private car
- 9:50-11:30 Walking in Yamate and Motomachi Areas
- 11:30-13:00 Lunch at Kaseiro Chinese restaurant in Yokohama China Town
- 13:00-13:30 Drive to Okura Toen Pottery
- 13:30-15:30 Visit to Okura Toen Pottery & Tea Time
- 15:30 Drive to central Yokohama
- 16:00 Check in to The Kahara Hotel & Resort Yokohama
- 19:00- Dinner at Bashamichi Jyubankan Restaurant

<Overnight Stay> The Kahara Hotel & Resort Yokohama

↓ Continued on the next page

Yokohama & Hakone – Discover the tradition and the beauty Day 2 - 1



In the morning, we leave Yokohama and drive to Hakone – the most popular mountain resort area in greater Tokyo region.



(C) 箱根神社

After visiting the shrine, the program will take you to the famous Okada Museum of Art.

This museum is known for housing many master pieces of Japanese and Oriental Art.



(C) 箱根神社

In Hakone, the first stop will be Hakone Jinja Shrine, an ancient Shinto Shrine situated lake side at Ashinoko Lake.

Walk into the spiritual sanctuary of the shrine and receive a special blessing ceremony in the ceremony hall.



(C) 強羅花壇

After the museum visit you will be taken to lunch at Gora Kadan, one of the best Japanese Ryokans (Guest house) in Japan.

Enjoy a seasonal Kaiseki Course Meal, served at in a private room, originally build for the Imperial family of Japan.

Yokohama & Hakone – Discover the tradition and the beauty Day 2 - 2



After lunch and on our way back to Yokohama, we will stop at Izumibashi Sake Brewery in Ebina City.

Izumibashi Sake Brewery was founded in the mid 19th century. The brewery takes a natural approach to Sake making, working in harmony with the natural environment and only using organic ingredients. With the slogan “Exquisite Sake should start from excellent rice production” this brewery grows their own rice for Sake production.

Enjoy the brewery tour and some fine Sake tasting.

After the Sake Brewery visit, we will drive back to Yokohama. On your arrival at the Cruise Terminal, you will embark on your cruise ship.



Day 2 Schedule

8:30- Departure from Yokohama
 8:30-10:00 Drive to Hakone Shrine by private car
 9:30-10:30 Visit to Hakone Shrine with Special Blessing Ceremony
 10:30-11:00 Drive to Okada Museum of Art
 11:00-12:00 Visit to Okada Museum of Art
 12:00-12:10 Drive to Lunch Restaurant
 12:10-13:30 Lunch at Kaiseki Kadan (Gora Kadan)
 13:30-14:45 Drive to Izumibashi Sake Brewery
 14:45-16:00 Visit to Izumibashi Sake Brewery
 16:00-17:00 Drive back to Yokohama Cruise Terminal. On arrival, embarkation.

Inclusion :

Private Tour Guide/Private Car/

Day 1: Lunch at Kaseiro Restaurant/Visit to Okura Toen Pottery (with Tea Time)/Dinner at Bashamichi Jyubankan/Overnight Stay at The Kahara Hotel and Resort

Day 2: Visit to Hakone Shrine & Special Blessing Ceremony/Entrance to Okada Museum/Kaiseki Lunch at Kaiseki Kadan/Visit to Izumibashi Sake Brewery

| Tier | 5-9pax | 10~14pax | 15-19pax | 20pax + |
|--------------------------------|-----------|-----------|-----------|-----------|
| Tour Price in JP¥ (Tentative) | ¥ 140,000 | ¥ 136,800 | ¥ 123,500 | ¥ 117,200 |
| Tour Price in US\$ (Tentative) | \$1,273 | \$1,244 | \$1,123 | \$1,065 |

*Price per person (Twin Share Basis) *Tax included

*Exchange Rate: 1USD=110JPY. The USD pricing may change depending on the exchange rate.



Proposal Note

- ▶ All the four prices listed in this proposal are tax inclusive.
- ▶ All the four prices listed in this proposal are the initial price (Prices can change without prior notice).
- ▶ Due to the COVID-19 situation or other reasons, it is possible that tour programs or experiences in this proposal may not be available.
- ▶ If you have any questions about the contents in this proposal, please contact the content organizer.



Contact Information

Yokohama Conventions & Visitors Bureau

Sales and Promotion Division / Business Development Department

TEL : +81-45-221-2111

E-mail : inbound@ycvb.or.jp

City of Yokohama Port and Harbor Bureau

Cruise Project Promotion Division

TEL : +81-45-671-7272

E-mail : kw-kyakusen@city.yokohama.jp

Bon Voyage!

圖通海橫
之岸濱

YOKOHAMA JAPAN'S FIRST PORT OF CALL

