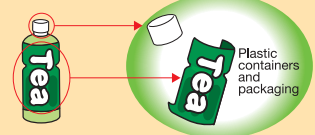


● **Disposing of PET Bottles !**

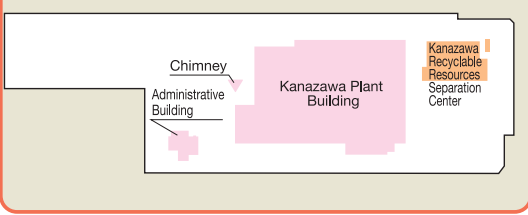
Lightly rinse PET bottles, and remove the label and caps. (Put caps and labels with plastic containers and packaging).

As long as we separate properly, we can recycle caps and labels, too!



"G30" mascot "Mio"

Map of Kanazawa Recyclable Resources Separation Center



Kanazawa Recyclable Resources Separation Center



Try out our Smartphone application for garbage separation !

Yokohama City Garbage Separation Application

This application allows the user to search information on garbage separation, and shows garbage collection days on the app's calendar. The app is also a convenient tool for all kinds of other information on garbage separation.



For those who prefer to use their traditional mobile phone, there is also a search screen for browsers.



Two-dimensional code for mobile phones

The app is available for free on the App Store or Play Store.

Yokohama City Garbage Separation Game

With this game, the user puts the garbage into the right box to learn how to separate garbage in a fun way. Play with your family and friends to see who knows the most about it !



This is a fun way to learn about garbage separation-try for as many points as you can!



3R Dream Search

The Yokohama 3R Dream (Slim) Plan is a new Yokohama City plan following on the G30. With the knowledge and steps taken previously, your cooperation with us on this new initiative is much appreciated.



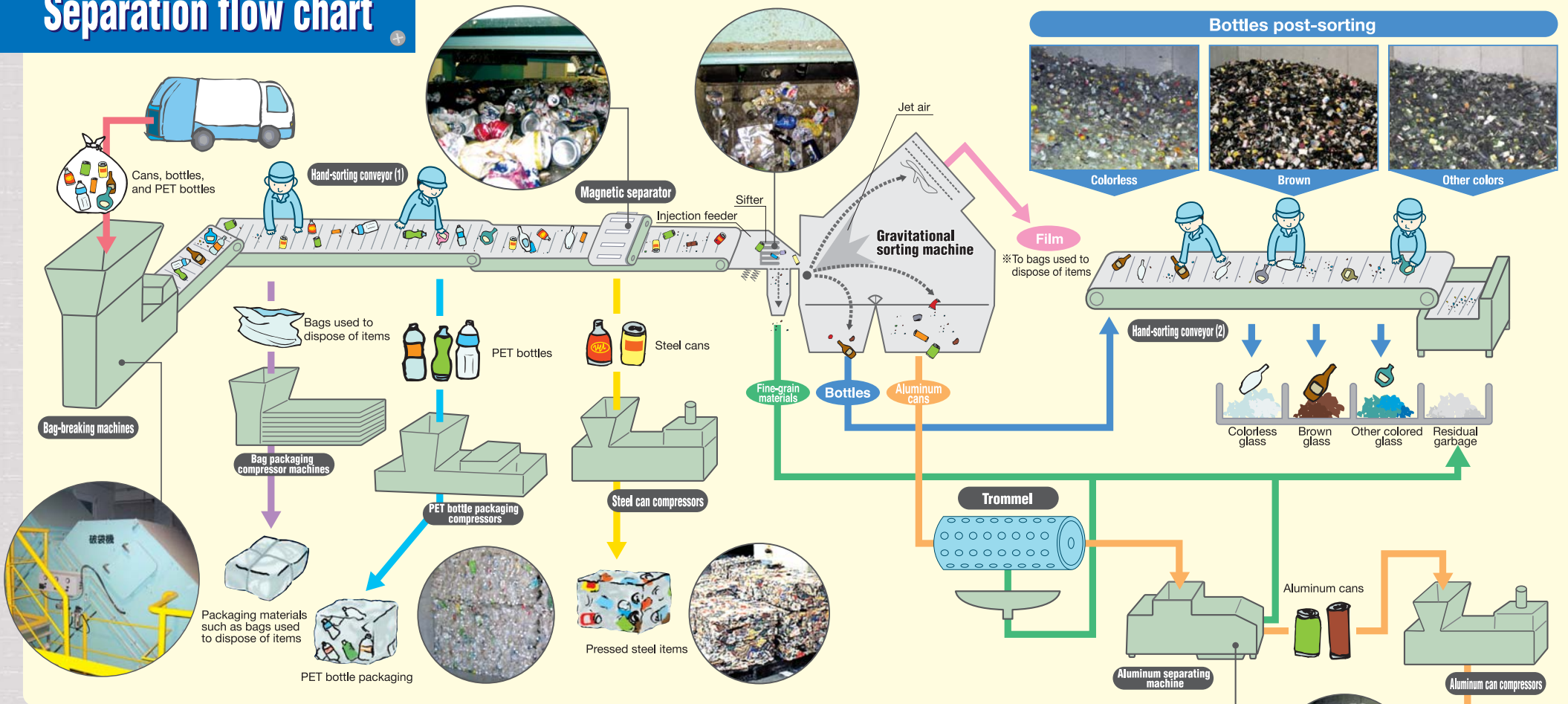
"Yokohama 3R Dream!" mascot "Io"

Kanazawa Recyclable Resources Separation Center

2-7-1 Sachiura, Kanazawa-ku, Yokohama
☎ 045(785)6802 📠 045(785)6829

Facility Name	Kanazawa Recyclable Resources Separation Center	Processing capacity	30 tons/day of cans, bottles, and PET bottles
Location	2-7-1 Sachiura, Kanazawa-ku, Yokohama		
Site space	Inside Kanazawa Plant	Major facilities	One bag-breaking machine, one gravitational sorting machine, one aluminum separating machine, one magnetic separator, two hand-sorting conveyors; one trommel; four packaging compressors (steel, aluminum, burnable items, PET bottles), deodorizer towers
Building floor area	3,355m ²		
Building structure	Reinforced concrete with steel frame, three floors		
Construction completion date:	March 2002		

Separation flow chart



The Recyclable Resources Separation Center collects separated cans, bottles, and PET bottles, sorts them by type, and processes these items for recycle.

Items to be separated are: PET bottles, aluminum cans, steel cans, colorless glass, brown glass, and other colored glass.

Glass is stored in separate yards by color. Other items are compressed for packaging, sold as recyclable resources, or consigned for pickup by designated corporations based on the Containers/Packaging Recycling Act.

Equipment Overview	Major Facilities		Functions	Commercialized products
	Bag-breaking machines	1 unit 6 t/h/unit	Breaks down bags containing cans, bottles, and PET bottles	
	Supply conveyor	1 unit 6 t/h unit	Bags, cans, bottles, and PET bottles transported to separation process on the 2nd floor	
	Hand-sorting conveyor (1)	1 unit 6 t/h unit	Bags and PET bottles are separated and inappropriate items removed	
	Gravitational sorting machine	1 unit 4.1 t/h unit	Separates bags, cans, and bottles using specific gravity	
	Magnetic separator	1 unit 0.8 t/h unit	Extracts steel cans	
	Aluminum separating machine	1 unit 0.4 t/h	Aluminum cans separated from residual garbage	
	Trommel	1 unit 0.4 t/h	Separate residual garbage	
	Hand-sorting conveyors (2)	1 unit 2.1 t/h	Sorts glass bottles by color	Materials to make new bottles, etc.
	Steel can compressor machine	1 unit 0.8 t/h	Presses steel can	Metals used as construction materials
Aluminum can compressors	1 unit 0.4 t/h unit	Presses aluminum can	Aluminum alloys used for aluminum cans, etc.	
PET bottle packaging compressors	1 unit 1.1 t/h	Packages PET bottles	Textile products and materials, PET bottles	
Bag packaging compressors	1 unit 0.4 t/h per	Packages separated bags		
Deodorizing tower	1 unit 580 m ³ /min/unit	Stops offensive odors by activated carbon adsorption		



Pressed aluminum items

