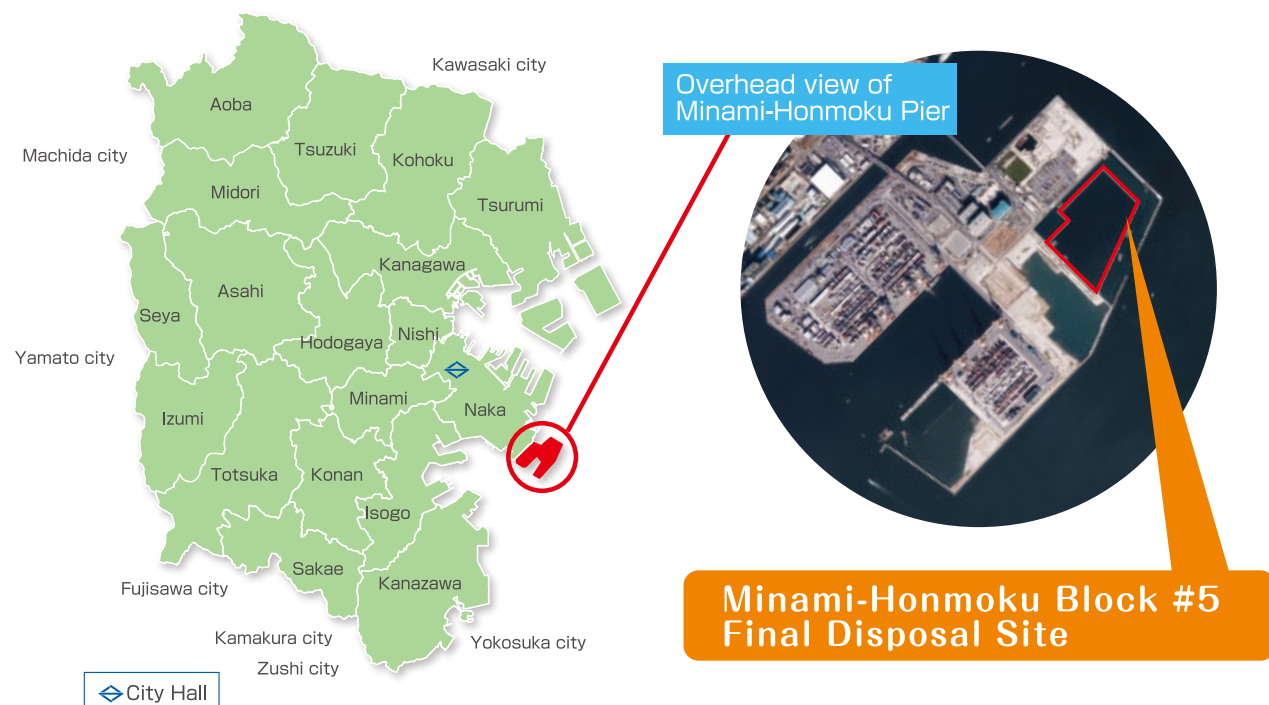


Enquiries

Yokohama Resources & Waste Recycling Bureau	Management of Reclaimed Land for Disposal (Acceptance of general waste)	TEL 045-671-2560 FAX 045-664-9490 1-1 Minato-cho, Naka-ku 231-0017 (Matsumura Building 1-13, Sumiyoshicho, Naka-ku, Yokohama-shi)
	Industrial Waste Countermeasures Division (Acceptance of industrial waste)	TEL 045-671-2515 FAX 045-651-6805 1-1 Minato-cho, Naka-ku 231-0017 (Matsumura Building 1-13, Sumiyoshicho, Naka-ku, Yokohama-shi)
Minami-Honmoku Final Disposal Site Management Office		TEL 045-625-9647 FAX 045-625-9648 4 Minami-honmoku, Naka-ku Yokohama-shi 231-0816

Details of location



Overhead view of Minami-Honmoku Pier

Minami-Honmoku Block #5 Final Disposal Site

Yokohama Resources & Waste Recycling Bureau Website
<http://www.city.yokohama.lg.jp/shigen/>



Minami-Honmoku Block #5 Final disposal Site

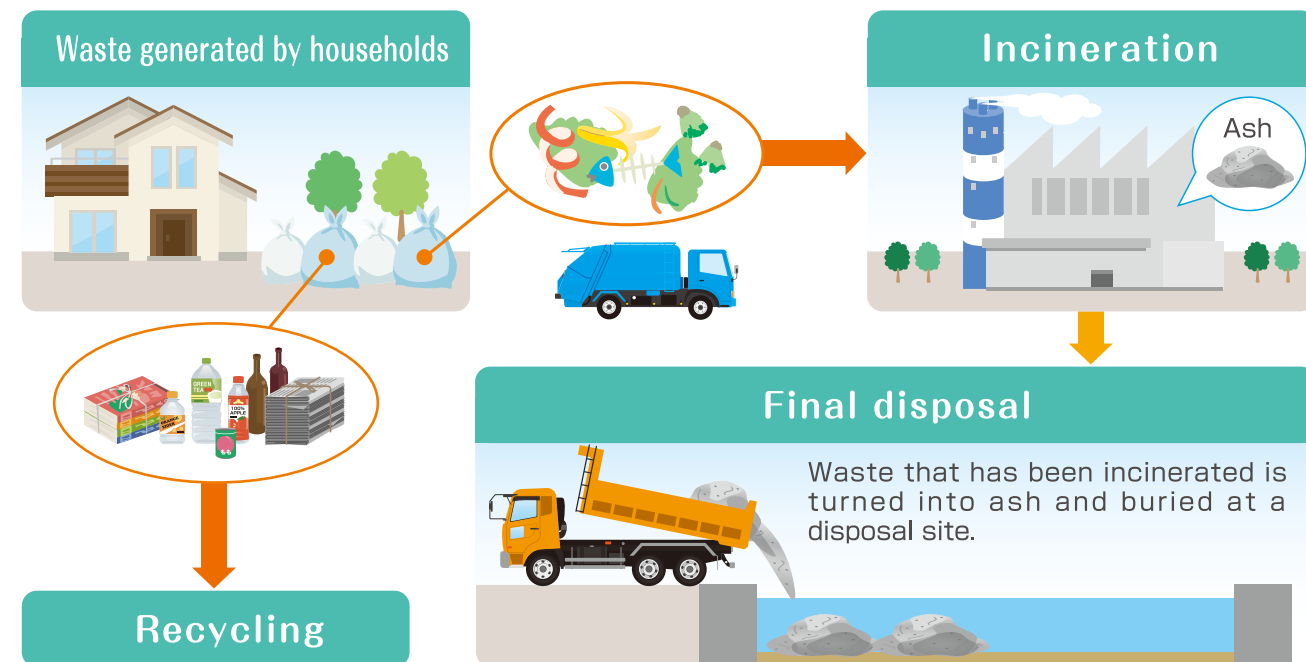
Keeping our city clean for future generations



Overview of Minami-Honmoku Block #5 Final Disposal Site

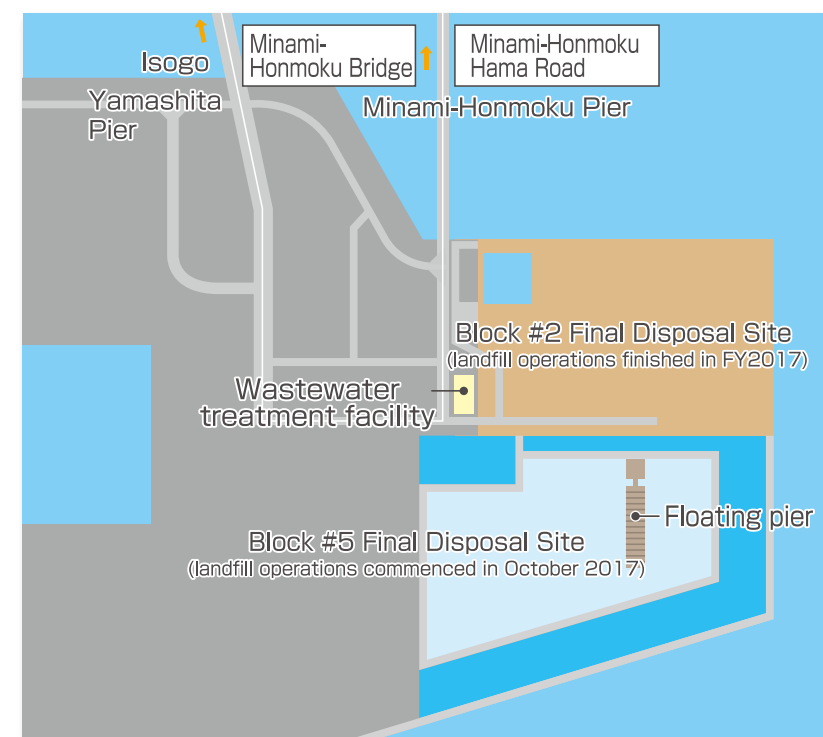
What is a final disposal site?

There are two kinds of household waste: burnable waste which is destined for incineration and non-burnable waste that can be recycled. Burnable waste is driven to an incineration plant to be burned, and the leftover ashes are then buried at a disposal site. Minami-Honmoku Block #5 is the only general final disposal site in operation in Yokohama; as such, it is a precious asset for our city.



● Landfill sites also accept some forms of industrial waste.

Overview diagram



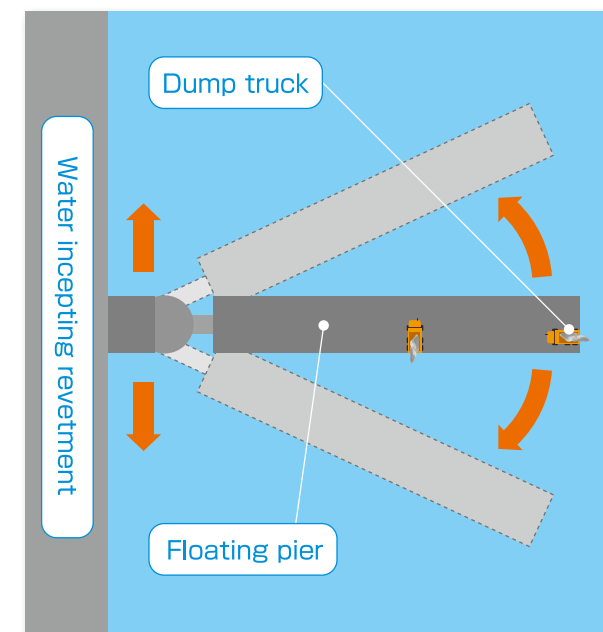
Address	4 address destination Minami-honmoku, Naka-ku Yokohama-shi
Landfill area	16.4ha
Landfill capacity	4,000,000m ³
Depth of water	Approx. 35m
Duration of landfill operations	Approx. 50 years from October 2017

Regarding landfill methods

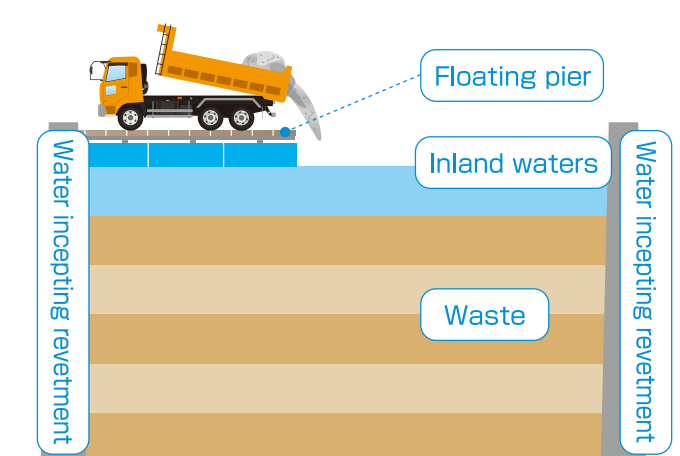
Minami-Honmoku Block #5 Final Disposal Site is a maritime waste disposal site located at a depth of approximately 35 m. A water incepting revetment surrounds the inland waters where waste is sent to landfill, preventing water pollution in sea areas.

A floating pier is used for landfill operations, and the periodic relocation of this pier allows waste to be filled in standardized layers, thus ultimately creating a stable and uniform subsoil.

Planar image



A cross-sectional image



By relocating the floating pier, waste can be sent to landfill in a way that allows thin layers to be built up over a wide area.

Regarding water treatment

The water level of inland waters at maritime waste disposal site rises due to the landfilling of waste and rainfall, making it necessary to discharge water externally to prevent flooding. This is why wastewater treatment facilities take steps to treat and purify water so that there are no adverse effects on the surrounding environment.

