



Yokohama Municipal Transportation supports the daily lives of Yokohama's citizens

Yokohama has developed as a modern city after the Port of Yokohama was opened to the world in 1859. Yokohama Municipal Transportation began operations with trams in April 1921, and municipal bus service started 1928.

In order to improve road congestion caused by economic growth, the tram was discontinued, and the Yokohama Municipal Subway Blue Line commenced operations as an urban railway service in 1972. The Yokohama Municipal Subway Green Line opened in 2008.

These Yokohama Municipal Transportation services have developed as Yokohama has grown as a city, and are used by around one million passengers (*1) every day.

Yokohama Municipal Transportation will celebrate its 100th anniversary in 2021, which is an important turning point.

We will keep striving to provide high standards of safe, punctual, and comfortable transportation services, and enhance our organizational capabilities to ensure that all passengers are fully satisfied.

(*1: Calculated in fiscal year 2019)



City Populations in Japan (As of September 1st, 2020)

1	Tokyo Pref.	Special Wards	Approximately 9,670,000 people
2	Kanagawa Pref.	Yokohama City	Approximately 3,750,000 people
3	Osaka Pref.	Osaka City	Approximately 2,750,000 people
4	Aichi Pref.	Nagoya City	Approximately 2,320,000 people
5	Hokkaido Pref.	Sapporo City	Approximately 1,970,000 people

Source: City of Yokohama Statistics Portal Site, Estimated Populations of Major Cities

Transportation Statistics (Calculated in fiscal year 2019)

		Number of vehicles in service		Total distance of operations		Passenger revenue (excl. tax)		Number of passengers	
		Annual (vehicles)	Average per day (vehicles)	Annual (km)	Average per day (km)	Annual (¥1,000)	Average per day (¥1,000)	Annual (1,000 Passengers)	Average per day (1,000 Passengers)
Bus	Public Service	236,198	645	28,741,161.1	78,527.8	19,167,911	52,371	124,333	340
	Charter Service	10,346	28	681,511.0	1,862.1	403,547	1,103	1,997	5
Bus Total		246,544	674	29,422,672.1	80,389.8	19,571,458	53,474	126,329	345
Subway	Blue Line	72,636	199	30,146,157.0	82,366.5	32,541,686	88,912	198,772	543
	Green Line	19,440	53	6,483,420.8	17,714.3	7,241,210	19,785	54,051	148
Subway Total		92,076	252	36,629,577.8	100,080.8	39,782,896	108,696	243,162	664
Total		—	—	—	—	59,354,354	162,170	369,491	1,009

※When transferring the Blue Line and Green Line the subway passengers are counted as one passenger, so the number of subway passengers does not match the total number of passengers on each line.



Municipal Bus Service

Outline of Bus Service

The operation network of the municipal bus service focuses on the central area of the city, and has connectivity with railway stations to create a broad transportation network. Municipal bus service has undergone improvements to fit citizens' needs, including revisions of bus routes in accordance with transportation demand and new road construction. Accordingly, the ridership of municipal buses is a daily average of around 340,000 people.

The City also has special bus routes for tourists such as “Akai Kutsu.” “Akai Kutsu” buses have a nostalgic retro design, and tour around sightseeing spots in the Yokohama Bay area. Other examples of special tourism buses include “BAYSIDE BLUE.”



As of March 31st, 2020

	Overview of Municipal Bus Service	
Total Kilometers Covered	513.8 km	
Number of Routes	136	
Average Route Length	7.1 km	
Number of Bus Stops	1,280	
Number of Buses Owned	819	
Number of Buses in Operation	Average of 645 buses per day	
Kilometers Covered	Average of 80,000 km per day	
Number of Passengers	Average of 340,000 passengers per day	
Fares*	Adult	Cash/IC: ¥220
	Children	Cash/IC: ¥110

* Fixed sum per route. Excluding special routes.



▲ Akai Kutsu



▲ BAYSIDE BLUE



Municipal Subway Service

Outline of Subway Service

The Municipal Subway plays an important role as a foundation for creating a vibrant city, and connects the city center with outlying areas. The daily ridership has grown to approximately 660,000.

The Blue Line (Yokohama Municipal Urban Railway Lines No. 1 and No. 3) has been extended since operations were started in December 1972. It currently consists of an entire length of 40.4 km between Azamino and Shonandai, and cooperates with fixed-route bus services and other railway lines operated by private companies to form a wide-area transportation network that plays an enormous role in the development of the city as a major means of transportation for Yokohama.

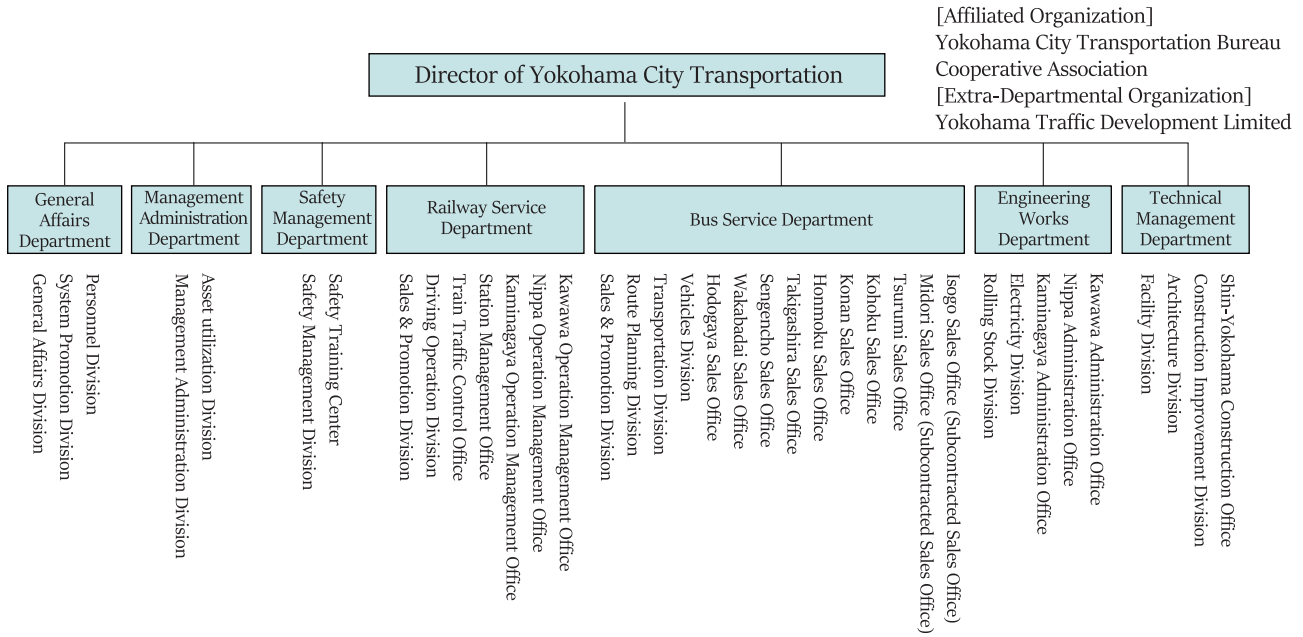


In addition, operation of the Green Line (Yokohama Municipal Urban Railway Line No.4), which runs east and west through the northern part of Yokohama, started in March 2008. This line spans 13 km and runs from Nakayama Station to Hiyoshi Station while connecting with the Blue Line at Center Minami Station/Center Kita Station, and has drastically improved access to central Tokyo and northern residential area of Yokohama.

As of March 31st, 2020

		Blue Line	Green Line
Area Covered		Azamino - Shonandai	Nakayama - Hiyoshi
Kilometers Covered		40.4 km	13.0 km
Number of Stations (Number of aboveground stations)		32 stations (5 stations)	10 stations (3 stations) Center Kita and Center Minami use the same station
Time Required		68 minutes (60 minutes on the rapid train) * Excluding rush hour	21 minutes
Weekday Operation Frequency	Morning Rush	4 minutes 30 seconds	3 minutes 10 seconds
	Daytime	5 minutes 30 seconds - 10 minutes 25 seconds	7 minutes 30 seconds
	Evening Rush	6 minutes	6 minutes
Number of Trains Operated		181 on weekdays, 163 on Saturdays and holidays	190 on weekdays, 142 on Saturdays and holidays
Number of Cars Per Train		6	4
Types of Rolling stock		5 types (3000-series (A, N, R, S, V))	1 type (10000 series)
Number of Cars Owned		216 Cars(36 trains)	68 Cars(17 trains)
Depot		Kaminagaya Depot, Nippa Depot	Kawawa Depot
Fares		Adult Cash: ¥210 - 560 IC: ¥210 - 555 Children Cash: ¥110 - 280 IC: ¥105 - 277	

Organizational Chart (As of April 1st, 2021)



Full-time Employees: 2,423 (As of February 1st, 2021)

Yokohama Municipal Transportation Network



▲ Blue Line



▲ Green Line

Transportation Bureau, City of Yokohama

Published in 2021 April
 Editing & Publishing: General Affairs Division
 WEB: <https://www.city.yokohama.lg.jp/kotsu/>
 E-mail: kt-somu@city.yokohama.jp

